

Chapter 21

Cancer survival in Incheon, Republic of Korea, 1997–2001

Woo ZH, Hong YC, Kim WC and Pu YK

Abstract

The Incheon cancer registry was established in 1997. Cancer is not a notifiable disease, hence registration of cases is done by active methods. The registry contributed survival data for 42 cancer sites or types registered during 1997–2001. The follow-up information has been obtained predominantly by passive methods, with median follow-up ranging between 1–44 months for various cancers. The proportion with histologically verified diagnosis for different cancers ranged between 16–100%; death certificates only (DCOs) comprised 0–51%; 49–100% of total registered cases were included for the survival analysis. The top-ranking cancers on 5-year age-standardized relative survival rates were testis (98%), thyroid (90%), ureter (87%), adrenal gland (86%), non-melanoma skin (83%), corpus uteri (82%), Hodgkin lymphoma (81%), breast and cervix (74%). Five-year relative survival by age group showed a decreasing trend with increasing age groups for cancers of the stomach, small intestine, colon, gall bladder, larynx, lung, breast, cervix and ovary, and was fluctuating for other cancers.

Incheon cancer registry

The Incheon cancer registry was established in October 1997 at the College of Medicine, Inha University, Incheon. Data collection on incident cancer cases started retrospectively to include cases from the beginning of 1997. The registry is rather new, and its data were included in volume IX of the quinquennial IARC publication *Cancer Incidence in Five Continents*. [1] Cancer is not a notifiable disease, hence registration of cases is done by active methods. The principal sources of information on cancer cases are the records in more than 100 medical institutions, comprising hospitals in public and private sectors, pathology laboratories, radiation and imaging centres in and around Incheon. The registry covers an area of 986 km² and caters to an entirely urban population of about 2.6 million with a sex ratio of 980 females to 1000 males in 2004. The average annual age-standardized incidence rate (ASR) is 265 per 100 000 among males and 165 per 100 000 among females, with a lifetime cumulative risk of one in 4 of developing cancer in the period 1997–2002. The common age-standardized incidence rate of cancers among males are stomach (62), lung (50) and liver (37), and among females are breast (25), stomach (23) and cervix (20).

The registry is contributing data on survival from 42 cancer sites or types registered during 1997–2001 for the first time in this volume of IARC publication on *Cancer Survival in Africa, Asia, the Caribbean and Central America*.

Data quality indices (Table 1)

The proportion of cases with histologically verified cancer diagnosis in the series is 71%, varying from 16% (cancer of the uterus unspecified) to 100% (Hodgkin lymphoma). The frequency of cases registered on the basis of a death certificate only (DCOs) is 8%, ranging between nil in many cancers and 51% in uterus unspecified cancer. Cases excluded without any follow-up are negligible. Thus, 49–100% of the total cases registered are included in the estimation of the survival probability.

Outcome of follow-up (Table 2)

Follow-up information has been obtained predominantly by passive methods. These included obtaining cancer mortality information from the death certificates in vital statistics section. The mortality data are periodically matched with the incident cancer database using the national identity number. The vital status of the unmatched incident cases is also ascertained by review of medical charts. However, all incident cases for whom death information is not available were presumed to be alive on the last date of the year for which the mortality data are fully utilized for matching.

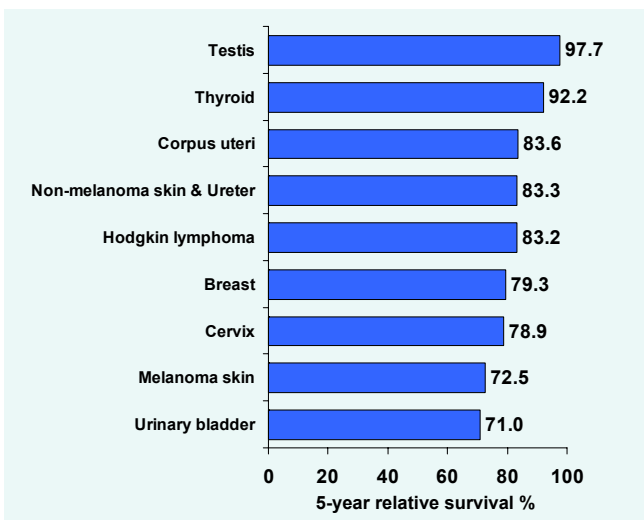
The closing date of follow-up was 31st December 2002. The median follow-up ranged from 1 month in unspecified uterus cancer to 44 months for Hodgkin lymphoma.

Survival statistics

All ages and both sexes together (Table 3)

The top-ranking cancers on 5-year relative survival are testis (98%), thyroid (92%), corpus uteri (84%), non-melanoma skin and ureter (83%). The lowest survival rate is encountered with pancreatic cancer (12%) preceded by unspecified uterus (15%), liver (16%), lung (18%) and gall bladder (20%). Salivary gland (69%) and nasopharynx (56%), among other head and neck cancers and colon and rectum (55%), among gastrointestinal cancers, have higher survival than others. Survival from cancers of the urinary system is 71% in urinary bladder and 67% for kidney. Hodgkin lymphoma had a better survival (83%) than non-Hodgkin (54%). The survival figures for leukaemias are 51% for lymphoid and 40% for myeloid.

Figure 1a. Top ten cancers (ranked by survival), Incheon, Republic of Korea, 1997–2001



The 5-year age-standardized relative survival (ASRS) probability for all ages together is generally less than or similar to the corresponding unadjusted one for a majority of cancers. Also, the 5-year ASRS (0–74 years of age) is generally higher than or similar to the corresponding ASRS (all ages) for a majority of cancers.

Sex

Male (Table 4a)

The 5-year relative survival is distinctly higher in cancers of the tongue, other thoracic organs, non-melanoma skin, peritoneum, ureter, bladder and Hodgkin lymphoma among males than females.

Female (Table 4a)

The 5-year relative survival estimates for cancers of the breast, cervix and ovary are 79%, 79% and 60%,

respectively. The survival is notably higher among females than males in cancers of the oral cavity, salivary gland, tonsil, nasopharynx, hypopharynx, small intestine, nose/sinuses, skin melanoma, adrenal gland, non-Hodgkin lymphoma, multiple myeloma and myeloid leukaemia.

Figure 1b. Top five cancers (ranked by survival), Male, Incheon, Republic of Korea, 1997–2001

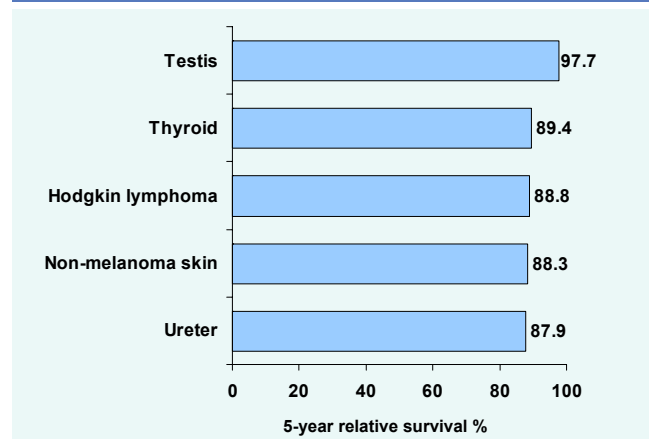
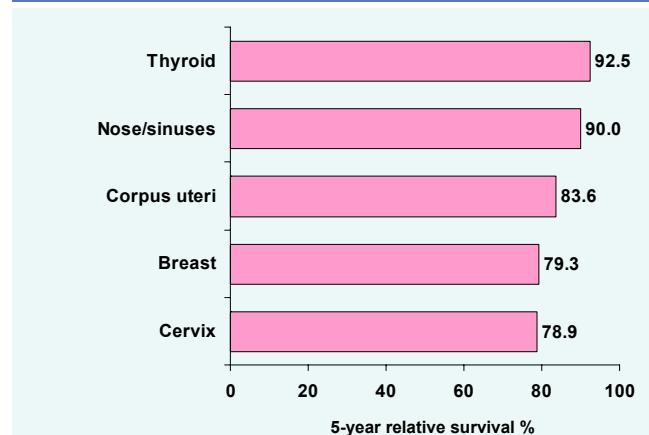


Figure 1c. Top five cancers (ranked by survival), Female, Busan, Republic of Korea, 1997–2001



Age group (Table 4b)

The 5-year relative survival by age group reveals an inverse relationship: a decreasing survival with increasing age at diagnosis in cancers of the stomach, small intestine, colon, gall bladder, larynx, lung, breast, cervix and ovary. For other cancers, no pattern on the survival by age group is forthcoming.

References

1. Curado MP, Edwards B, Shin HR, Storm H, Ferlay J, Heanue M and Boyle P. *Cancer Incidence in Five Continents, Vol. IX : IARC Scientific Publications No. 160*. IARC Press, Lyon, IARC.

Table 1. Data quality indices - Proportion of histologically verified and death certificate only cases, number and proportion of included and excluded cases by site: Incheon, Republic of Korea, 1997–2001 cases followed-up until 2002

Site	ICD-10	Total registered	%		Excluded cases					Included cases	
			HV	DCO	DCO	Follow-up	Others	Total	%	No.	%
Tongue	C01-02	52	86.5	3.8	2	0	0	2	3.8	50	96.2
Oral cavity	C03-06	76	78.9	15.8	12	0	0	12	15.8	64	84.2
Salivary gland	C07-08	51	78.4	3.9	2	0	0	2	3.9	49	96.1
Tonsil	C09	27	85.2	0.0	0	0	0	0	0.0	27	100.0
Nasopharynx	C11	74	91.9	0.0	0	0	0	0	0.0	74	100.0
Hypopharynx	C12-13	51	78.4	0.0	0	0	0	0	0.0	51	100.0
Oesophagus	C15	347	75.2	12.1	42	1	0	43	12.4	304	87.6
Stomach	C16	4 693	81.2	8.3	389	2	9	400	8.5	4 293	91.5
Small intestine	C17	86	86.0	4.7	4	0	1	5	5.8	81	94.2
Colon	C18	1 215	80.1	7.7	94	1	0	95	7.8	1 120	92.2
Rectum	C19-20	1 168	86.7	3.9	45	0	1	46	3.9	1 122	96.1
Liver	C22	2 672	20.9	12.7	339	1	4	344	12.9	2 328	87.1
Gall bladder	C23-24	580	51.6	12.8	74	0	0	74	12.8	506	87.2
Pancreas	C25	625	32.8	17.1	107	0	0	107	17.1	518	82.9
Nose/Sinuses	C30-31	52	86.5	3.8	2	0	0	2	3.8	50	96.2
Larynx	C32	247	76.9	10.1	25	0	0	25	10.1	222	89.9
Lung	C33-34	2 974	63.8	13.6	405	0	3	408	13.7	2 566	86.3
Other thoracic organs	C37-38	66	66.7	13.6	9	1	0	10	15.2	56	84.8
Bone	C40-41	115	71.3	7.8	9	0	2	11	9.6	104	90.4
Melanoma of skin	C43	45	95.6	0.0	0	0	0	0	0.0	45	100.0
Other skin	C44	276	89.1	4.3	12	0	0	12	4.3	264	95.7
Connective tissue	C47+C49	138	88.4	2.2	3	0	0	3	2.2	135	97.8
Peritoneum	C48	57	63.2	5.3	3	0	0	3	5.3	54	94.7
Breast	C50	1 505	90.8	3.9	59	1	0	60	4.0	1 445	96.0
Cervix	C53	1 334	90.4	2.3	31	1	4	36	2.7	1 298	97.3
Corpus uteri	C54	140	95.0	0.0	0	0	0	0	0.0	140	100.0
Uterus unspecified	C55	67	16.4	50.7	34	0	0	34	50.7	33	49.3
Ovary	C56	420	79.3	7.1	30	0	0	30	7.1	390	92.9
Prostate	C61	309	83.8	8.7	27	0	0	27	8.7	282	91.3
Testis	C62	29	89.7	0.0	0	0	0	0	0.0	29	100.0
Kidney	C64	292	72.3	4.5	13	0	0	13	4.5	279	95.5
Renal pelvis	C65	34	91.2	0.0	0	0	0	0	0.0	34	100.0
Ureter	C66	34	88.2	2.9	1	0	0	1	2.9	33	97.1
Urinary bladder	C67	508	81.1	8.1	41	0	0	41	8.1	467	91.9
Brain & nervous system	C70-72	386	57.3	13.5	52	0	1	53	13.7	333	86.3
Thyroid	C73	729	90.1	2.3	17	0	0	17	2.3	712	97.7
Adrenal gland	C74	32	71.9	6.3	2	0	0	2	6.3	30	93.8
Hodgkin lymphoma	C81	28	100.0	0.0	0	0	0	0	0.0	28	100.0
Non-Hodgkin lymphoma	C82-85+C96	488	98.6	0.0	0	0	5	5	1.0	483	99.0
Multiple myeloma	C90	89	95.5	0.0	0	0	0	0	0.0	89	100.0
Lymphoid leukaemia	C91	125	98.4	0.0	0	0	0	0	0.0	125	100.0
Myeloid leukaemia	C92-94	251	98.0	0.0	0	0	1	1	0.4	250	99.6

HV: histologically verified; DCO: death certificate only

Table 2. Number and proportion of cases by vital status and median follow-up (in months) by site: Incheon, Republic of Korea, 1997–2001 cases followed-up until 2002

Site	ICD-10	Cases included	Dead		Alive		Complete FU		Median FU (in months)
			No.	%	No.	%	No.	%	
Tongue	C01-02	50	26	52.0	24	48.0	50	100.0	23.2
Oral cavity	C03-06	64	26	40.6	38	59.4	64	100.0	24.4
Salivary gland	C07-08	49	15	30.6	34	69.4	49	100.0	37.6
Tonsil	C09	27	14	51.9	13	48.1	27	100.0	18.9
Nasopharynx	C11	74	32	43.2	42	56.8	74	100.0	24.7
Hypopharynx	C12-13	51	33	64.7	18	35.3	51	100.0	18.5
Oesophagus	C15	304	226	74.3	78	25.7	304	100.0	10.4
Stomach	C16	4 293	2 099	48.9	2 194	51.1	4 293	100.0	19.9
Small intestine	C17	81	47	58.0	34	42.0	81	100.0	14.1
Colon	C18	1 120	448	40.0	672	60.0	1 120	100.0	24.2
Rectum	C19-20	1 122	434	38.7	688	61.3	1 122	100.0	24.9
Liver	C22	2 328	1 816	78.0	512	22.0	2 328	100.0	5.6
Gall bladder	C23-24	506	377	74.5	129	25.5	506	100.0	9.4
Pancreas	C25	518	440	84.9	78	15.1	518	100.0	4.1
Nose/Sinuses	C30-31	50	17	34.0	33	66.0	50	100.0	31.2
Larynx	C32	222	91	41.0	131	59.0	222	100.0	23.9
Lung	C33-34	2 566	2 002	78.0	564	22.0	2 566	100.0	7.5
Other thoracic organs	C37-38	56	29	51.8	27	48.2	56	100.0	18.3
Bone	C40-41	104	33	31.7	71	68.3	104	100.0	35.8
Melanoma of skin	C43	45	15	33.3	30	66.7	45	100.0	21.5
Other skin	C44	264	58	22.0	206	78.0	264	100.0	32.2
Connective tissue	C47+C49	135	46	34.1	89	65.9	135	100.0	28.9
Peritoneum	C48	54	36	66.7	18	33.3	54	100.0	19.3
Breast	C50	1 445	201	13.9	1 244	86.1	1 445	100.0	34.3
Cervix	C53	1 298	234	18.0	1 064	82.0	1 298	100.0	38.4
Corpus uteri	C54	140	23	16.4	117	83.6	140	100.0	34.5
Uterus unspecified	C55	33	23	69.7	10	30.3	33	100.0	0.9
Ovary	C56	390	119	30.5	271	69.5	390	100.0	32.8
Prostate	C61	282	96	34.0	186	66.0	282	100.0	25.1
Testis	C62	29	1	3.4	28	96.6	29	100.0	39.5
Kidney	C64	279	86	30.8	193	69.2	279	100.0	27.5
Renal pelvis	C65	34	12	35.3	22	64.7	34	100.0	25.5
Ureter	C66	33	9	27.3	24	72.7	33	100.0	26.3
Urinary bladder	C67	467	134	28.7	333	71.3	467	100.0	30.2
Brain & nervous system	C70-72	333	171	51.4	162	48.6	333	100.0	19.6
Thyroid	C73	712	49	6.9	663	93.1	712	100.0	41.0
Adrenal gland	C74	30	11	36.7	19	63.3	30	100.0	25.3
Hodgkin lymphoma	C81	28	5	17.9	23	82.1	28	100.0	43.9
Non-Hodgkin lymphoma	C82-85+C96	483	220	45.5	263	54.5	483	100.0	22.5
Multiple myeloma	C90	89	57	64.0	32	36.0	89	100.0	15.4
Lymphoid leukaemia	C91	125	58	46.4	67	53.6	125	100.0	20.4
Myeloid leukaemia	C92-94	250	143	57.2	107	42.8	250	100.0	18.0

FU: follow-up

Table 3. Comparison of 1-, 3- and 5-year absolute and relative survival and 5-year age-standardized relative survival by site: Incheon, Republic of Korea, 1997–2001 cases followed-up until 2002

Site	ICD-10	Cases included	% Absolute survival			% Relative survival			% ASRS at 5-years	
			1-year	3-year	5-year	1-year	3-year	5-year	all ages	0-74 years
Tongue	C01-02	50	61.5	47.1	40.6	63.0	49.8	44.2	44.7	52.0
Oral cavity	C03-06	64	61.8	48.7	45.5	63.5	52.4	50.7	51.3	54.4
Salivary gland	C07-08	49	86.3	70.5	63.3	87.9	74.4	69.3	66.9	69.7
Tonsil	C09	27	74.1	47.9	40.5	75.8	50.9	44.5	42.3	48.4
Nasopharynx	C11	74	77.0	56.5	53.5	77.7	57.9	55.9	45.2	53.6
Hypopharynx	C12-13	51	60.8	41.8	29.1	62.5	45.0	32.7	37.1	38.3
Oesophagus	C15	304	39.9	20.4	17.7	41.1	22.4	21.3	21.7	25.9
Stomach	C16	4 293	61.2	46.7	41.9	62.7	49.9	47.0	42.9	50.0
Small intestine	C17	81	51.2	40.8	34.1	52.5	43.4	37.5	34.6	47.7
Colon	C18	1 120	69.6	54.7	48.7	71.4	58.6	54.5	49.5	57.4
Rectum	C19-20	1 122	77.7	58.7	49.6	79.4	62.6	55.4	46.7	57.6
Liver	C22	2 328	32.4	18.6	14.9	33.0	19.6	16.3	16.0	16.8
Gall bladder	C23-24	506	39.3	21.7	17.5	40.5	23.7	20.3	22.5	25.3
Pancreas	C25	518	21.9	11.9	11.0	22.5	12.7	12.3	11.3	14.2
Nose/Sinuses	C30-31	50	76.9	63.1	56.5	78.6	67.4	62.6	73.9	63.4
Larynx	C32	222	65.2	53.5	48.1	67.0	58.0	55.2	55.5	61.6
Lung	C33-34	2 566	34.0	17.5	15.5	35.2	19.1	18.3	18.4	20.6
Other thoracic organs	C37-38	56	54.5	38.3	30.7	55.7	41.0	34.2	31.2	32.5
Bone	C40-41	104	73.9	67.2	59.9	74.9	69.1	63.0	43.2	46.9
Melanoma of skin	C43	45	80.0	64.0	64.0	81.6	68.3	72.5	71.0	71.5
Other skin	C44	264	85.9	74.0	69.7	88.8	81.7	83.3	83.0	85.4
Connective tissue	C47+C49	135	80.4	67.4	55.1	81.4	69.6	58.5	53.5	55.6
Peritoneum	C48	54	54.4	35.7	30.0	55.7	37.8	33.4	31.1	28.4
Breast	C50	1 445	91.3	82.6	77.3	91.8	83.9	79.3	74.3	78.5
Cervix	C53	1 298	90.1	81.5	76.3	90.8	83.1	78.9	73.8	79.5
Corpus uteri	C54	140	89.3	85.0	80.2	90.0	87.0	83.6	82.2	72.3
Uterus unspecified	C55	33	14.9	14.9	14.9	15.2	15.3	15.4	19.1	26.2
Ovary	C56	390	78.3	65.7	58.0	79.1	67.2	60.3	52.7	58.7
Prostate	C61	282	78.6	58.1	50.4	82.9	67.9	65.5	63.5	69.4
Testis	C62	29	100.0	96.1	96.1	100.3	97.1	97.7	98.3	98.3
Kidney	C64	279	74.7	65.1	61.1	76.2	68.7	66.9	64.4	67.9
Renal pelvis	C65	34	82.4	63.9	47.9	84.1	68.0	53.2	61.4	72.3
Ureter	C66	33	76.5	69.8	69.8	79.0	77.2	83.3	87.2	91.0
Urinary bladder	C67	467	78.0	65.5	60.1	80.7	72.1	71.0	65.9	76.1
Brain & nervous system	C70-72	333	56.5	43.7	38.5	57.2	44.9	40.0	39.6	41.0
Thyroid	C73	712	93.8	91.5	89.4	94.5	93.3	92.2	90.0	92.6
Adrenal gland	C74	30	75.0	54.8	54.8	75.4	55.5	56.1	86.1	78.4
Hodgkin lymphoma	C81	28	85.7	81.3	81.3	86.3	82.6	83.2	81.1	82.8
Non-Hodgkin lymphoma	C82-85+C96	483	70.3	53.0	50.9	71.4	55.2	54.2	53.8	57.4
Multiple myeloma	C90	89	56.2	33.7	25.3	57.3	35.9	28.4	27.2	29.0
Lymphoid leukaemia	C91	125	67.2	50.2	50.2	67.5	50.7	50.8	38.1	40.3
Myeloid leukaemia	C92-94	250	62.6	42.4	38.3	63.1	43.4	39.9	38.8	36.0

ASRS: age-standardized relative survival

Table 4a. Site-wise number of cases, 5-year absolute and relative survival by sex: Incheon, Republic of Korea, 1997–2001 cases followed-up until 2002

Site	ICD-10	Cases included	Male			Female		
			% 5-year survival			% 5-year survival		
			No.	Abs	Rel	No.	Abs	Rel
Tongue	C01-02	50	34	41.2	45.8	16	0.0	0.0
Oral cavity	C03-06	64	44	37.6	43.2	20	67.1	71.5
Salivary gland	C07-08	49	26	54.7	64.7	23	73.9	75.5
Tonsil	C09	27	19	31.3	34.3	8	61.4	67.8
Nasopharynx	C11	74	52	46.4	49.5	22	70.1	71.3
Hypopharynx	C12-13	51	49	25.8	28.8	2	100.0	121.7
Oesophagus	C15	304	268	18.0	21.9	36	15.1	16.4
Stomach	C16	4 293	2 896	42.1	48.0	1 397	41.5	45.0
Small intestine	C17	81	55	24.7	27.7	26	47.3	50.5
Colon	C18	1 120	593	49.0	56.1	527	48.3	52.8
Rectum	C19-20	1 122	622	44.7	51.4	500	55.4	59.9
Liver	C22	2 328	1 717	14.2	15.7	611	16.8	17.8
Gall bladder	C23-24	506	265	15.7	18.5	241	19.5	22.4
Pancreas	C25	518	313	10.7	12.0	205	11.5	12.6
Nose/Sinuses	C30-31	50	36	48.4	53.2	14	79.4	90.0
Larynx	C32	222	197	48.5	56.1	25	44.8	49.4
Lung	C33-34	2 566	1 884	14.1	16.8	682	19.4	22.1
Other thoracic organs	C37-38	56	29	37.9	41.1	27	0.0	0.0
Bone	C40-41	104	58	60.1	63.6	46	61.7	64.1
Melanoma of skin	C43	45	25	55.7	66.5	20	73.7	78.0
Other skin	C44	264	136	73.6	88.3	128	66.1	78.6
Connective tissue	C47+C49	135	73	57.2	60.4	62	55.6	59.8
Peritoneum	C48	54	25	36.0	41.8	29	22.6	23.5
Breast	C50	1 445	10	70.7	83.0	1 435	77.4	79.3
Cervix	C53	1 298				1 298	76.3	78.9
Corpus uteri	C54	140				140	80.2	83.6
Uterus unspecified	C55	33				33	14.9	15.4
Ovary	C56	390				390	58.0	60.3
Prostate	C61	282	282	50.4	65.5			
Testis	C62	29	29	96.1	97.7			
Kidney	C64	279	184	59.3	65.9	95	64.6	68.9
Renal pelvis	C65	34	24	50.0	55.9	10		
Ureter	C66	33	23	73.5	87.9	10	60.0	71.3
Urinary bladder	C67	467	376	62.0	73.6	91	53.0	60.6
Brain & nervous system	C70-72	333	152	34.6	36.1	181	41.5	43.1
Thyroid	C73	712	93	84.0	89.4	619	90.2	92.5
Adrenal gland	C74	30	16	47.8	48.4	14	62.2	64.1
Hodgkin lymphoma	C81	28	22	86.4	88.8	6	62.5	62.8
Non-Hodgkin lymphoma	C82-85+C96	483	289	45.5	49.1	194	59.1	61.6
Multiple myeloma	C90	89	48	12.3	14.3	41	37.3	40.7
Lymphoid leukaemia	C91	125	62	49.3	49.7	63	51.0	51.8
Myeloid leukaemia	C92-94	250	139	32.7	34.2	111	45.6	47.4

Abs: absolute survival; Rel: relative survival

Table 4b. Site-wise number of cases and relative survival by age group: Incheon, Republic of Korea, 1997–2001 cases followed-up until 2002

Site	ICD-10	Cases included	Number of cases by age group					Relative survival by age group				
			< 45	45-54	55-64	65-74	> 75	% 5-year survival				
								< 45	45-54	55-64	65-74	> 75
Tongue	C01-02	50	11	11	10	11	7	55.1	40.0	52.8	50.6	0.0
Oral cavity	C03-06	64	8	14	22	15	5	78.5	38.9	44.6		27.9
Salivary gland	C07-08	49	17	10	9	8	5	81.0	61.9	80.6	57.5	52.2
Tonsil	C09	27	5	8	4	5	5		55.7	26.9	90.3	0.0
Nasopharynx	C11	74	34	17	15	6	2	64.7	51.1	57.1	29.7	0.0
Hypopharynx	C12-13	51	1	5	26	15	4	102.0	14.1	39.1		33.3
Oesophagus	C15	304	7	33	115	107	42		23.9	21.6	23.7	13.8
Stomach	C16	4 293	741	750	1 162	1 113	527	56.0	54.8	51.2	42.1	26.4
Small intestine	C17	81	12	11	24	23	11	75.9	65.9	36.0	33.0	0.0
Colon	C18	1 120	161	181	297	315	166	68.2	63.8	56.5	50.1	38.1
Rectum	C19-20	1 122	157	192	354	273	146	53.7	58.9	67.3	50.1	28.0
Liver	C22	2 328	366	589	762	419	192	20.0	16.6	17.8	12.7	14.3
Gall bladder	C23-24	506	39	71	139	153	104	41.9	28.4	19.4	16.5	15.6
Pancreas	C25	518	43	90	154	145	86	24.7	14.8	19.2	5.3	5.7
Nose/Sinuses	C30-31	50	7	12	10	14	7	86.5	28.6	70.1	64.6	120.5
Larynx	C32	222	11	31	91	65	24	84.9	61.6	57.8	53.3	35.6
Lung	C33-34	2 566	171	312	700	895	488	28.1	28.0	18.7	16.0	13.2
Other thoracic organs	C37-38	56	21	9	10	10	6	47.7	0.0	28.0	45.2	
Bone	C40-41	104	70	8	9	6	11	78.4	65.9	40.6	21.8	30.4
Melanoma of skin	C43	45	11	5	13	11	5	82.3	58.8	90.4		62.0
Other skin	C44	264	44	31	50	69	70	96.9	77.6	81.3	86.4	77.0
Connective tissue	C47+C49	135	65	26	21	12	11	67.4	63.8	36.6	71.4	45.0
Peritoneum	C48	54	15	10	10	10	9	47.1	38.5	0.0		38.0
Breast	C50	1 445	642	420	250	104	29	81.2	80.1	78.9	71.0	60.3
Cervix	C53	1 298	555	284	260	147	52	88.3	78.0	76.5	68.4	30.1
Corpus uteri	C54	140	41	42	30	22	5	100.6	99.2	68.1	36.2	136.8
Uterus unspecified	C55	33	6	6	4	14	3	75.5	25.4	9.4		0.0
Ovary	C56	390	171	73	69	53	24	77.8	60.0	48.2	42.7	18.6
Prostate	C61	282	1	16	58	114	93	100.2	91.3	60.9	69.2	62.9
Testis	C62	29	26	2	1	0	0	96.5	105.3			
Kidney	C64	279	67	40	82	63	27	83.9	82.4	67.9	44.5	60.3
Renal pelvis	C65	34	2	1	18	10	3	101.5		60.0	31.1	
Ureter	C66	33	0	1	12	13	7			66.2	101.8	81.6
Urinary bladder	C67	467	39	71	117	156	84	73.7	87.8	79.3	69.1	50.6
Brain & nervous system	C70-72	333	170	46	61	38	18	49.9	32.7	38.3	26.3	23.6
Thyroid	C73	712	365	133	127	63	24	100.0	94.3	95.6	70.3	
Adrenal gland	C74	30	22	3	3	1	1	45.1	102.7		107.3	
Hodgkin lymphoma	C81	28	18	5	3	2	0	88.3	83.9			
Non-Hodgkin lymphoma	C82-85+C96	483	185	84	98	78	38	65.1	67.4	50.4	32.9	
Multiple myeloma	C90	89	10	21	28	19	11	32.3	28.2	37.7	19.9	21.8
Lymphoid leukaemia	C91	125	100	7	9	6	3	57.8		47.1	0.0	
Myeloid leukaemia	C92-94	250	136	52	31	16	15	47.9	38.8		0.0	51.6

