

Figure 2. 5-year age-standardized relative survival (ASRS%; 0-74 years) of selected cancers by all registries (ranked on ASRS)

Figure 2a. Tongue (ICD-10: C01-C02)

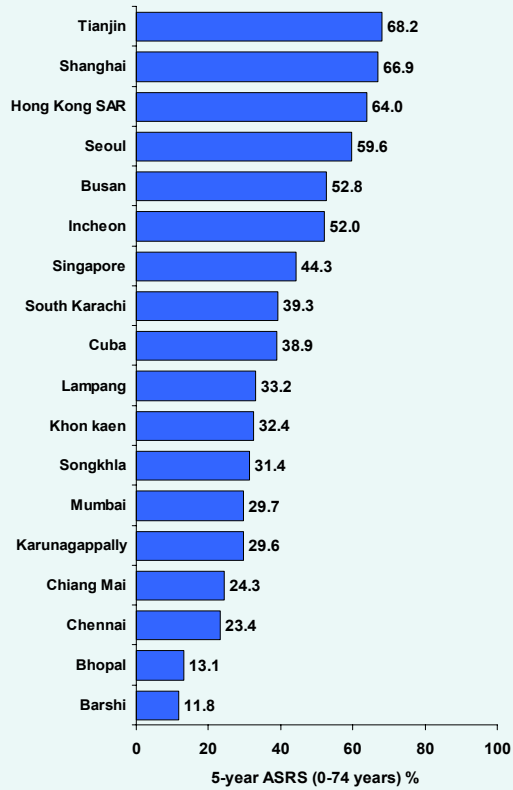


Figure 2c. Nasopharynx (ICD-10: C11)

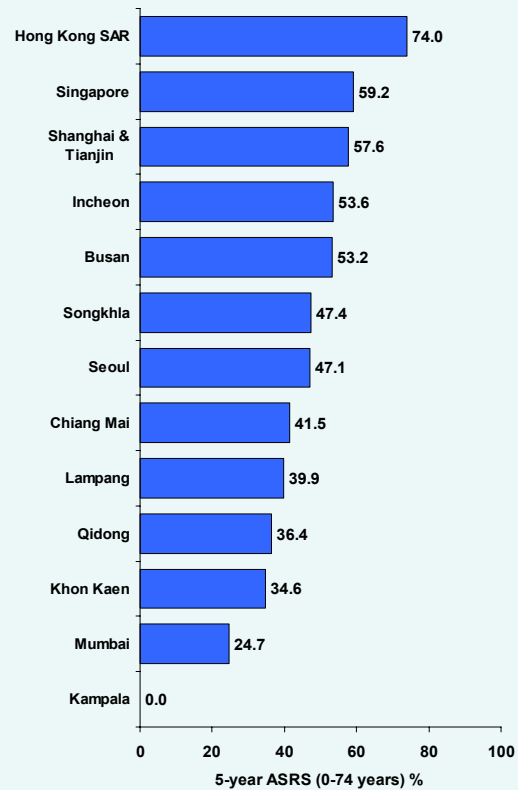


Figure 2b. Oral cavity (ICD-10: C03-06)

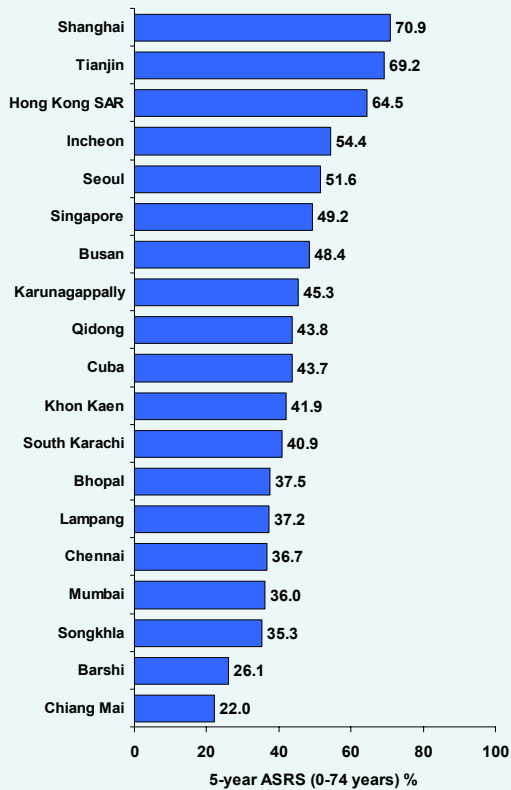


Figure 2d. Hypopharynx (ICD-10: C12-13)

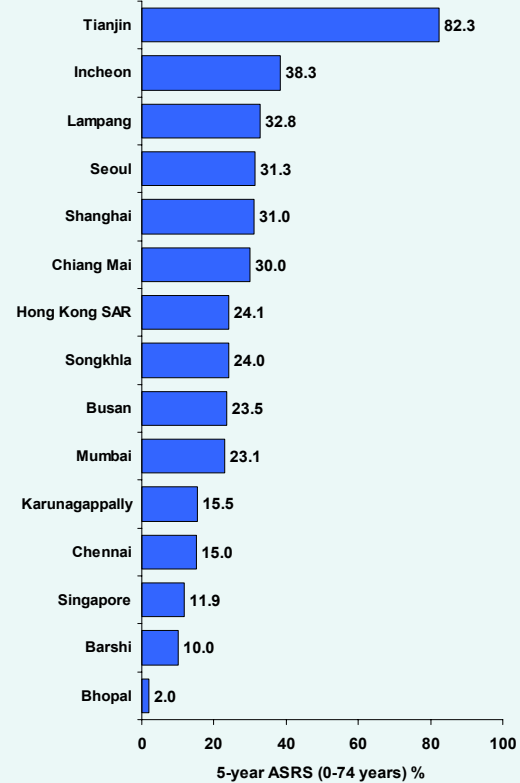


Figure 2 (Continued).

Figure 2e. Oesophagus (ICD-10: C15)

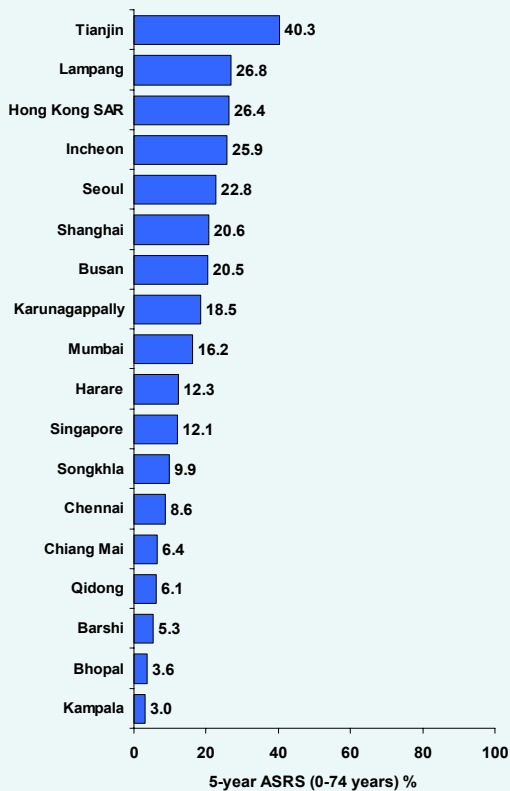


Figure 2g. Colon (ICD-10: C18)

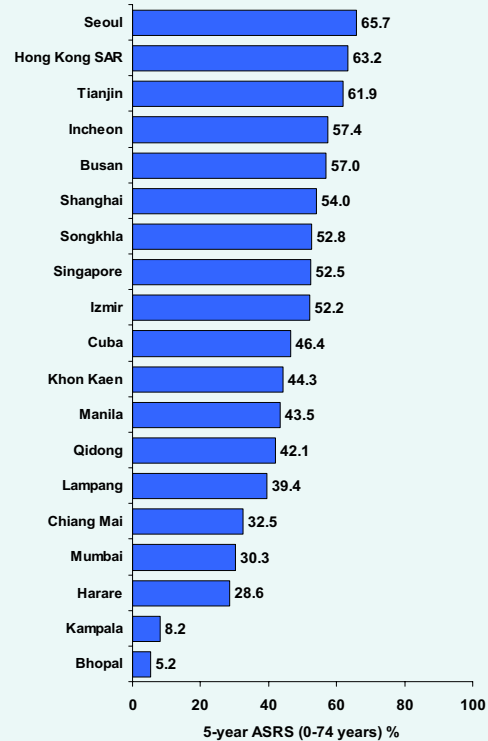


Figure 2f. Stomach (ICD-10: C16)

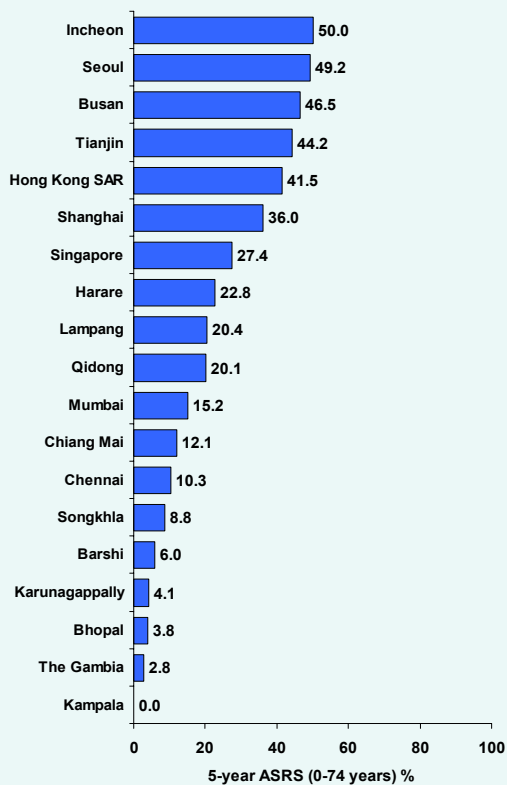


Figure 2h. Rectum (ICD-10: C19-20)

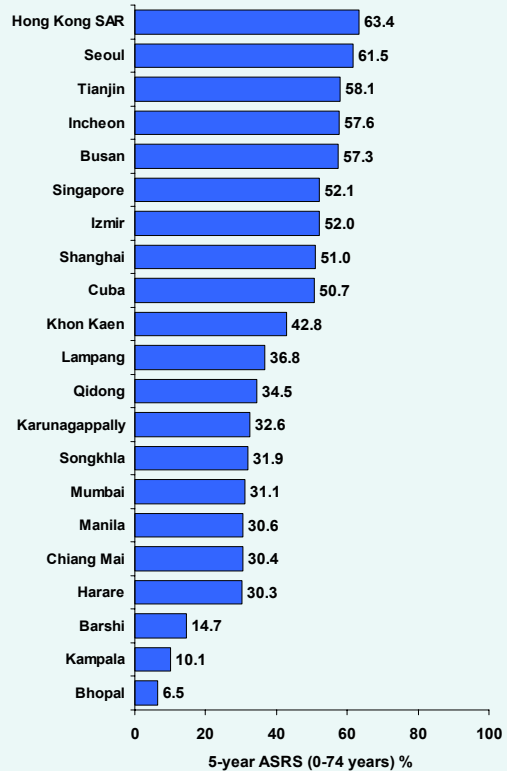


Figure 2 (Continued).

Figure 2i. Larynx (ICD-10: C32)

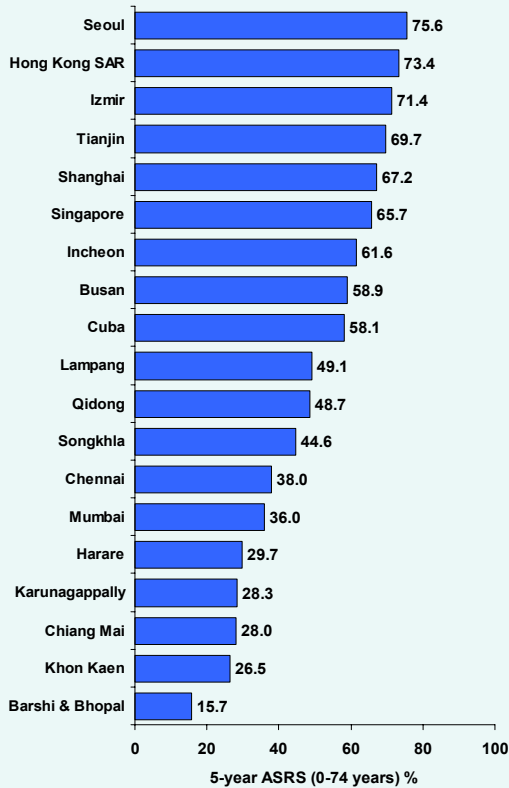


Figure 2k. Breast (ICD-10: C50)

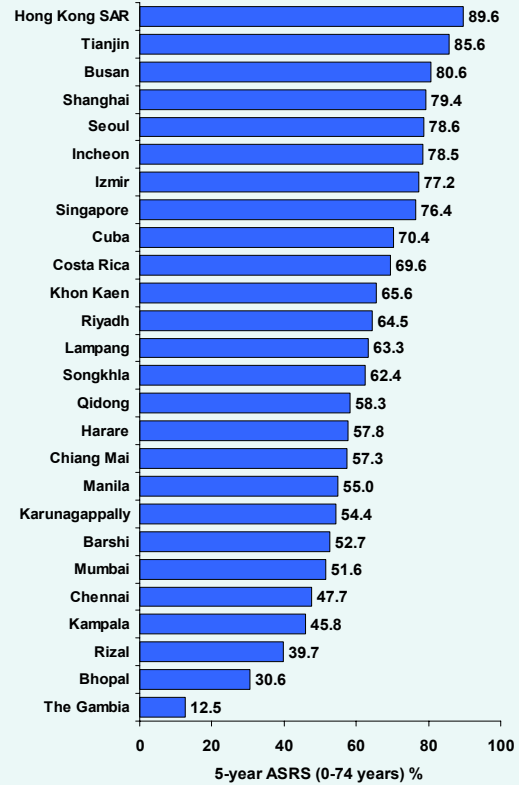


Figure 2j. Lung (ICD-10: C33-34)

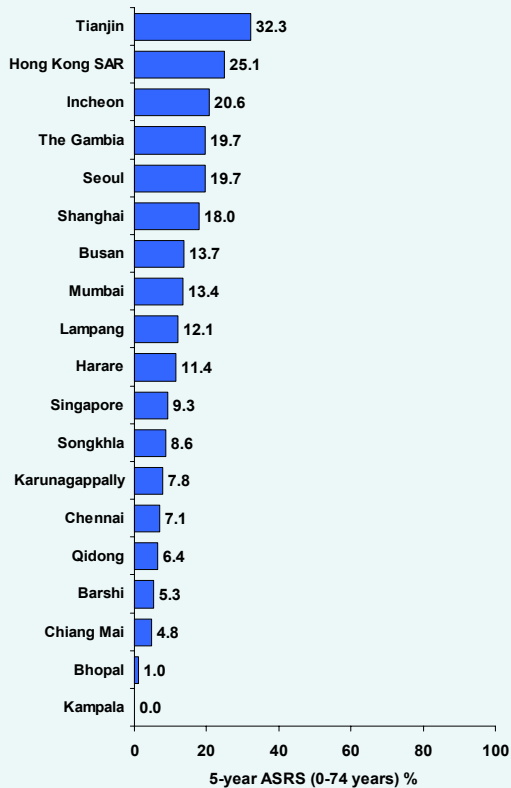


Figure 2l. Cervix uteri (ICD-10: C53)

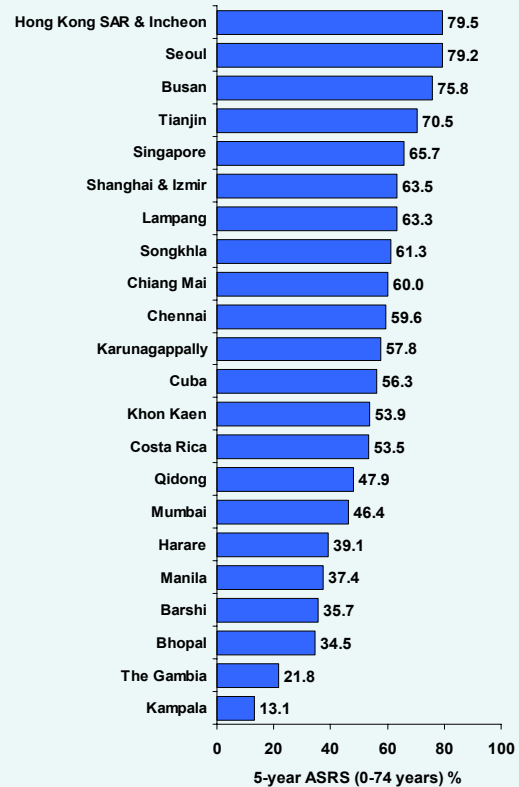


Figure 2 (Continued).

Figure 2m. Ovary (ICD-10: C56)

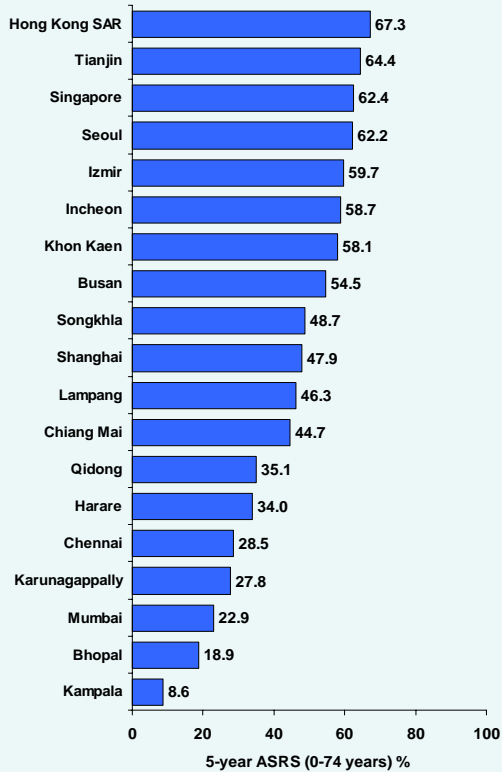


Figure 2o. Urinary bladder (ICD-10: C67)

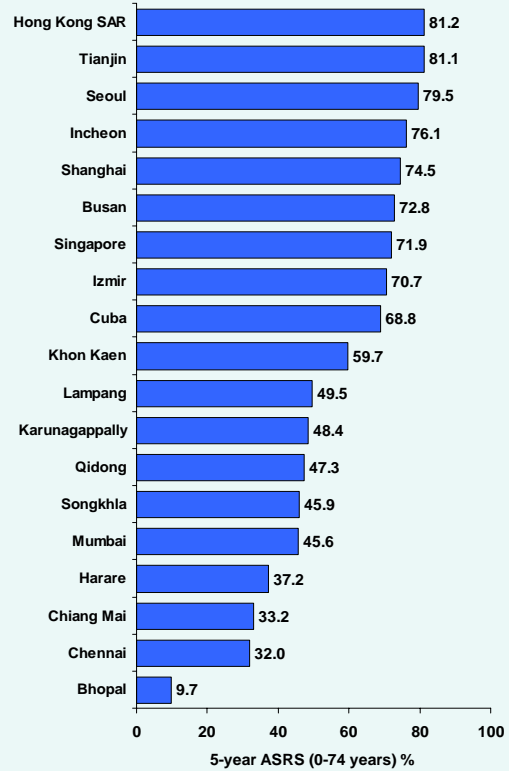


Figure 2n. Prostate (ICD-10: C61)

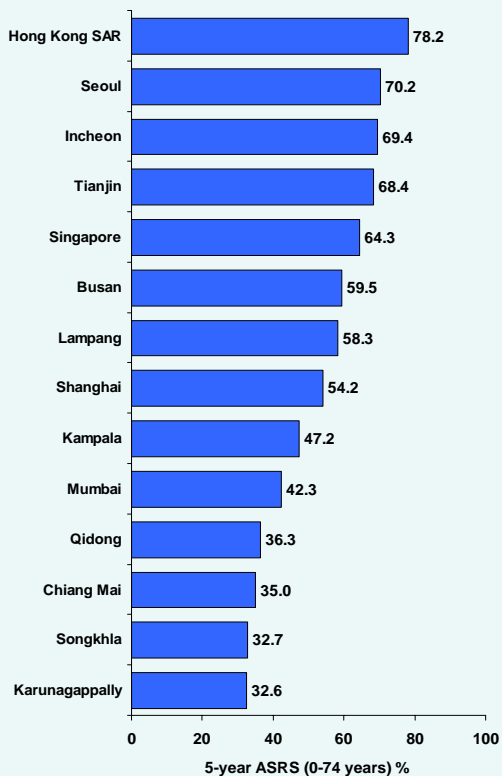


Figure 2p. Hodgkin lymphoma (ICD-10: C81)

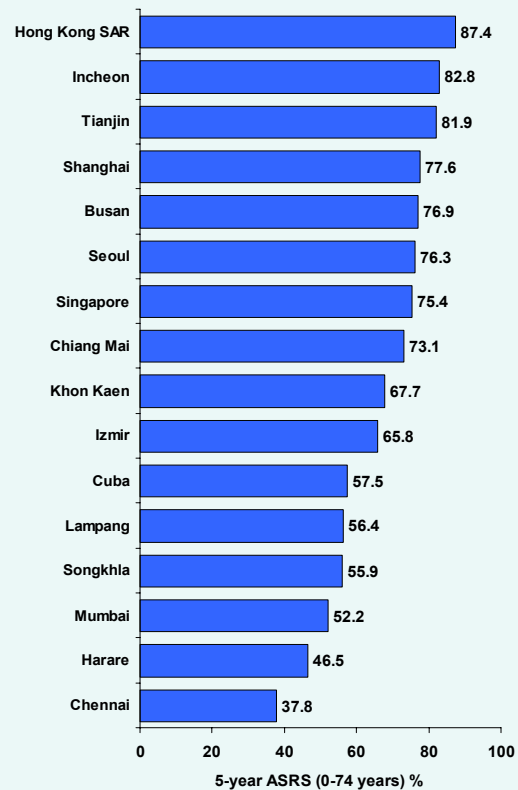


Figure 2 (Continued).

Figure 2q. Non-Hodgkin lymphoma (ICD-10: C82-85; C96)

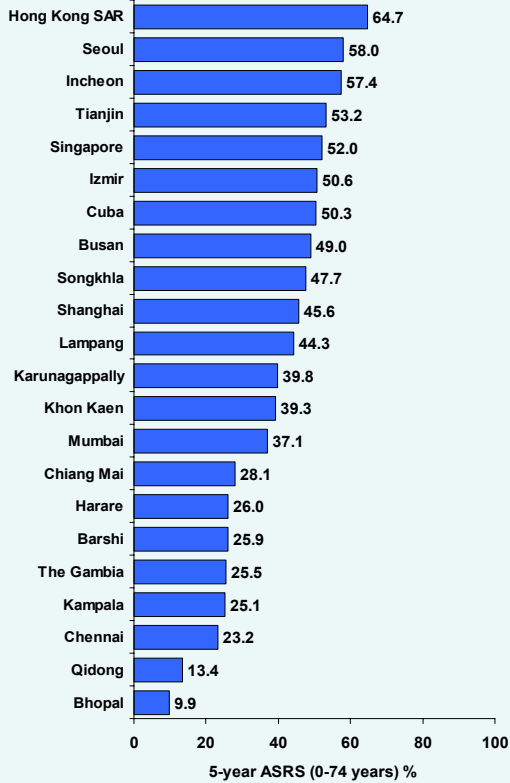


Figure 2s. Myeloid leukaemia (ICD-10: C92-94)

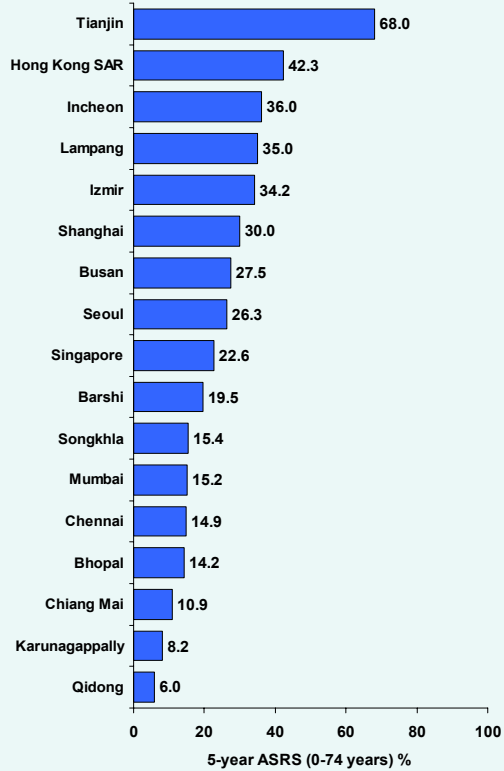


Figure 2r. Lymphoid leukaemia (ICD-10: C91)

